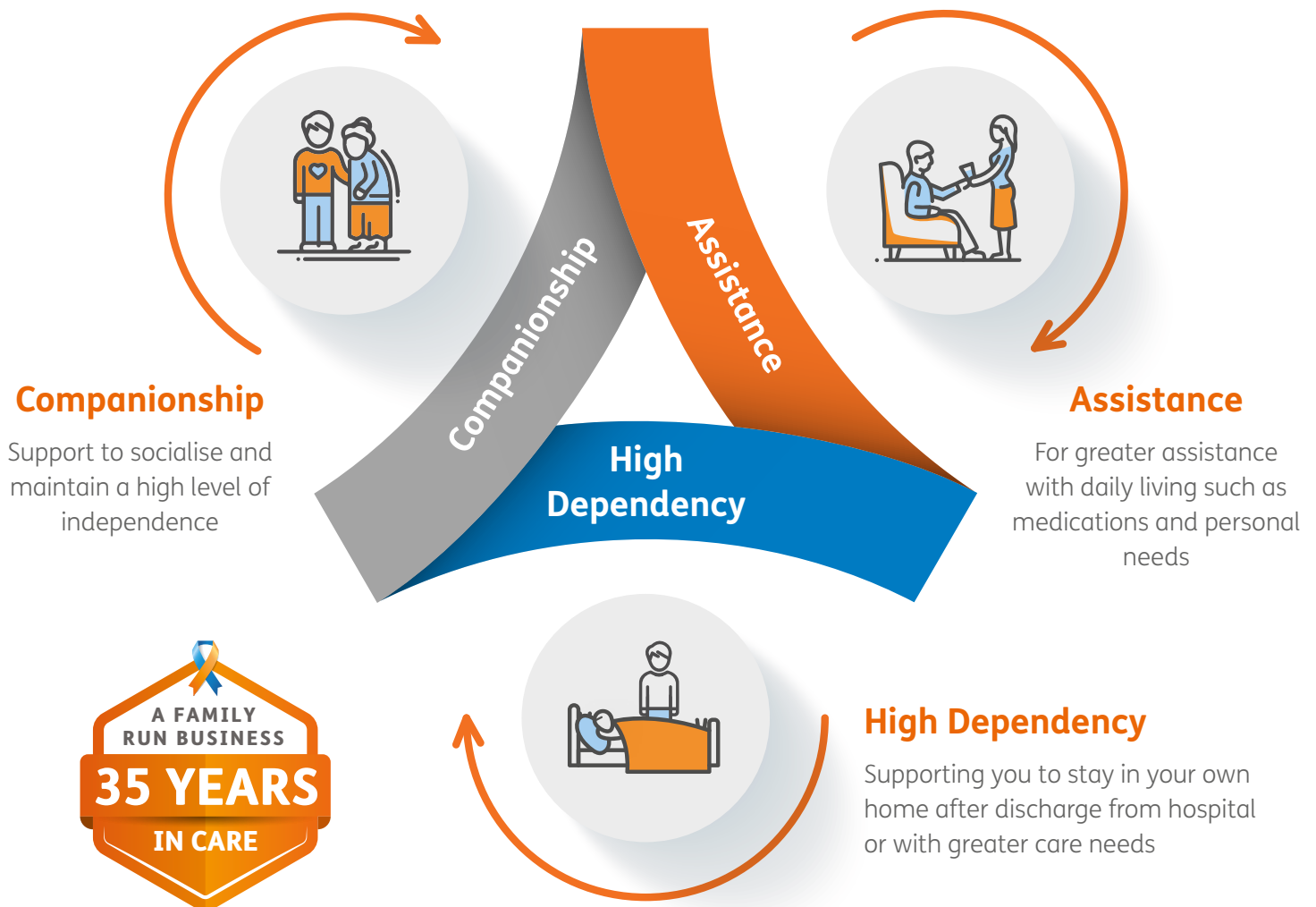


Live-In Care designed around your life

Altogether Care 
a better life

**FLEXIBLE, PERSONALISED CARE PLANS ARE DESIGNED TO ALWAYS
ENSURE YOU RECEIVE THE RIGHT LEVEL OF CARE AND ARE
ADAPTED AS YOUR NEEDS CHANGE**

Typically these can range from:



Contact us for an initial discussion to help you choose the level of individual care that is right for you.

01305 300 161 or email **contact@altogethercare.co.uk**,
altogethercare.co.uk/live-in-care